

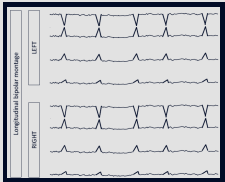
ACNS Standardized Critical Care EEG Terminology 2021 - Rhythmic or Periodic Patterns

The modifications to the American Clinical Neurophysiology Society Standardized Critical Care EEG Terminology guideline (2012) are now consolidated into a new 2021 version, containing multiple sections

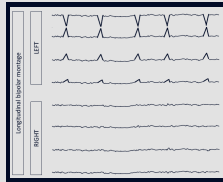
RHYTHMIC OR PERIODIC PATTERNS (RPPs)

MAIN TERM 1

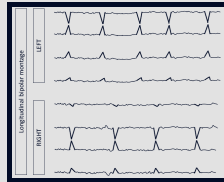
○ Generalized (G)



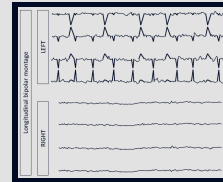
○ Lateralized (L)



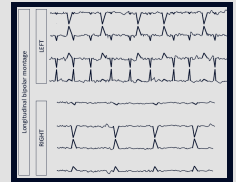
○ Bilateral independent (BI)



○ Unilateral independent (UI)

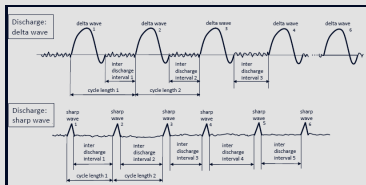


○ Multifocal (Mf)

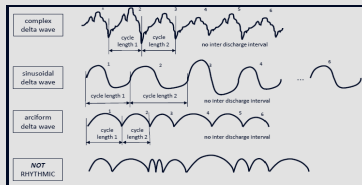


MAIN TERM 2

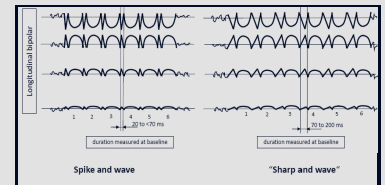
○ Periodic discharges (PDs)



○ Rhythmic delta activity (RDA)



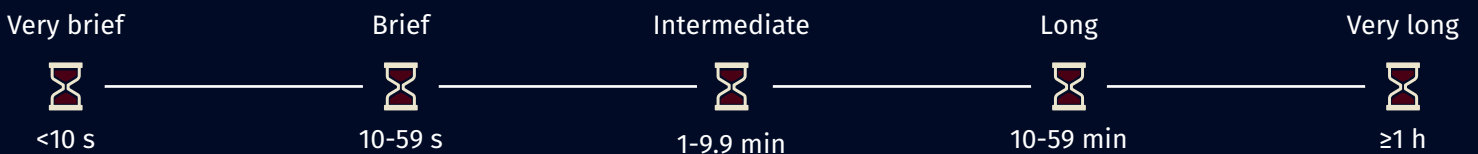
○ Spike-wave (SW)



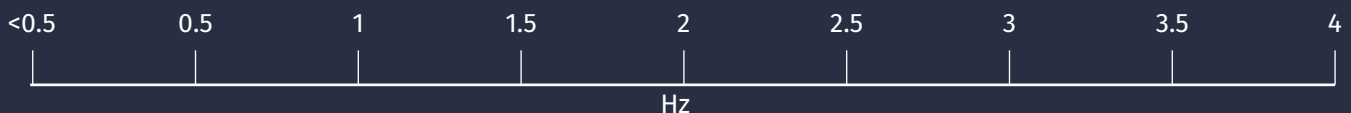
A. PREVALENCE



B. DURATION



C. FREQUENCY



D. PHASES

